

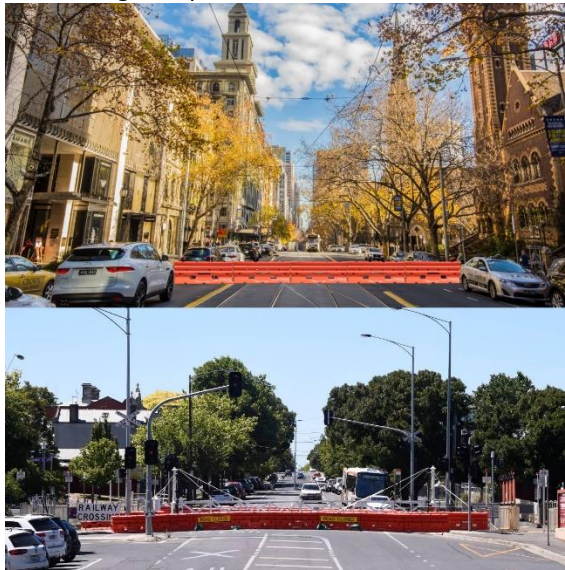
Media Release

10 February 2021

The city that is cut in half!!

In May 2020 a train burst through the railway gates outside the Ballarat Train Station. It has been almost NINE MONTHS since Lydiard Street, one of our most important arterial roads, has been closed limiting access from North to South.

Does the image below look right to you?



Would it be acceptable to have a main arterial road in the Melbourne CBD blocked off for nine months? No, of course not, so why allow it to happen in a regional city. We believe that nine months is ample time for the analysis of safety Vs heritage, however if more analysis is required, a temporary solution must be implemented NOW!

Ballarat is going to continue to make noise until something is done!

Commerce Ballarat has released an open letter to Minister Ben Carroll asking for urgent attention to this issue on both our Facebook and Instagram accounts.

For further comment contact CEO Jodie Gillett 0447 301966